

CoffeeSafe

Safety | Technology | Innovation

Issue: AugSeptOct-24

Coffee Machine Failures and Defect Data

CoffeeSafe provide ongoing nationwide training and awareness to Councils on Pressure Systems Safety Regulations (PSSR).

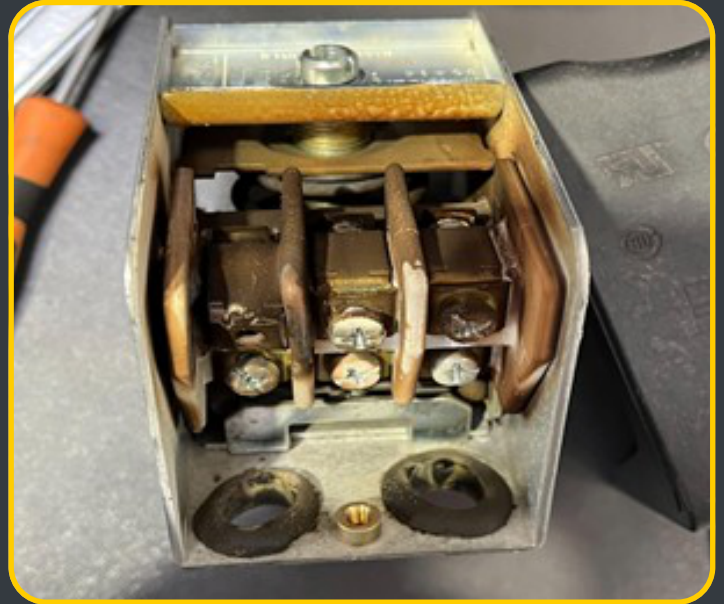
One of the most interactive topics during these sessions highlights coffee machine failures and defect data.

CoffeeSafe's in-house software collates defect data from coffee machines examined and reported on by a competent engineer during statutory examinations and services carried out.

Coffee machines can be quite complex by design, defect data collected acts as an important warning that machines, due to usage, age and additional contributing conditions can become a significant safety risk.

A Statutory Examination in accordance with a Written Scheme of Examination (WSE) identifies at an early stage any component deterioration, damage or malfunction that could give rise to danger.

Once defects are identified the necessary replacement or remedial work can be actioned by a competent engineer to ensure the machine is safe for continued use.



A recent explosion in an independent cafe situated in a busy tourist location has put further spotlight on second hand coffee machines. Coffee machines purchased and operated without being attached to a service provider can ultimately result in a pressure system being used without any ongoing engineering support and monitoring in terms of maintenance or statutory examinations.

A defect to a protective or control device could lead to catastrophic failure of a coffee machine.

One such incident caused by a pressure switch contactor failure resulted in the machine exploding at approximately 20 times the machine's safe operating limit.

This propelled the machine across a crowded cafe injuring members of staff and the general public.

"How many coffee machines are operating around staff and members of the public with a safety defect?"



✉ info@coffeesafe.com

☎ 01274 979920

🌐 www.coffeesafe.com

Think **Safety** First

L.E.A Coffee Machine Safety Discussion and PSSR Awareness Training

CoffeeSafe would like to thank Nuneaton and Bedworth Council for hosting a training day focusing on Coffee Machines involvement with the Pressure Systems Safety Regulations (PSSR).

We also had environmental health officers representing Rugby, Stratford and North Warwickshire Councils joining us.

This was a welcome opportunity to discuss the importance of raising Safety Awareness in this area as many Users and Owners of Coffee Machines are not aware of the risk the machines pose as a Pressure System.

Compliance with PSSR is a Legal Requirement and vastly reduces the dangers associated with operating Pressure Systems in a Work and Public environment.



Audits with CoffeeSafe



Quality assurance audits carried out with CoffeeSafe ensure coffee machine pressure system examinations are carried out in an objective, thorough and professional manner.

These audits are a great opportunity to share best practice, knowledge and promote high quality safety assessments.

Recently Audited:
Copper Black Coffee Ltd
Cafe Du Monde Limited
Gavstam-Uk Limited
CaffeSmith Ltd
Beanmachines
Caffe Delizia Ltd
The Roasting Party
Service Nation
Coffee Doctor

Quarterly Defect Data

August 2024 - October 2024

