

# CoffeeSafe

Safety | Technology | Innovation

Issue: 23-AugSepOct

## Legal Requirements

There is still lots of misinformation within the coffee industry regarding what is legally required by End Users to operate their coffee machines safely and legally to ensure compliance with the Pressure Systems Safety Regulations 2000 (PSSR).

We are going to look at key requirements of these Regulations as we are aware of widespread and repeated misinformation and mis-selling of these critical functions and identify what is actually required to ensure legal safety measures are met.



The pressure system examination is carried out in accordance with the **certified WSE** must include all protective devices, the steam vessel and associated pipework that could give rise to danger.

The recent HSE research report (RR1177) into coffee machines involvement with PSSR further highlighted the absolute necessity that the on board protective control systems must form part of the pressure system examination.

The accompanying examination report should document the findings and conclusion of the **thorough pressure system examination** and therefore present as a useful engineering document.

Please don't hesitate to contact us if you have any questions or would like to know more, additionally please also see our Frequently Asked Questions page on CoffeeSafe.

<https://www.coffeesafe.com/faq>

## Certified Written Schemes of Examination (WSE)

There are companies issuing documentation that does not meet the statutory legal requirements, additionally the scope of work does not meet the standards required.

All coffee machines new or old need to comply with the **Pressure Systems Safety Regulations**.

All businesses using a pressure system that produces steam must have a **Written Scheme of Examination (WSE)**.

The WSE will set out the **scope, nature and frequency** of the examination.

This document **must be certified** by either an **Incorporated Engineer** or a **Chartered Engineer**.

## Thorough Pressure System Examinations and Reporting

This is an area where some companies take short cuts and only inspect the steam vessel and test the safety valve, this does not comply with the requirements of PSSR.

## Who are CoffeeSafe?

We are industry leading professionals in applying the Pressure Systems Safety Regulations 2000 (PSSR) to all aspects of the Coffee Industry. We specialise in providing certified Written Schemes of Examination (WSE) to comply with these regulations whilst delivering The Institution of Occupational Safety and Health (IOSH) approved PSSR training courses.

We work in close partnership with industry manufacturers, suppliers and service providers, to help improve safety in the coffee industry.

We would love to speak with you  
**Think Safety First**

## Manchester City Council Safety Discussion and Awareness Training

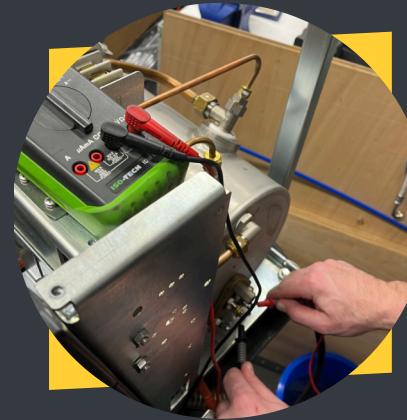
CoffeeSafe would like to thank the Environmental Health team at Manchester City Council led by Carmel Hughes who welcomed and provided us with the opportunity to deliver our certified PSSR 2000 Awareness training course.

The discussion and debate held along with the technical support we can offer on coffee machine safety, will help to raise awareness and reduce risk within the Manchester area.

We are now rolling these sessions out to councils nationwide on request.



## Audits at CoffeeSafe



Our service providers are dedicated to upholding the highest standards of safety, workmanship and customer care.

These audits are also a great opportunity to share best practice, raise standards and promote thorough pressure system examinations.

## Recently Audited

- Caffeine Fix Ltd
- Clifton Coffee Roasters
- Majestic Coffee
- Logic Vending
- Broderick's
- Steam & Grind
- Castell Howell
- Connect Vending
- Cafefix

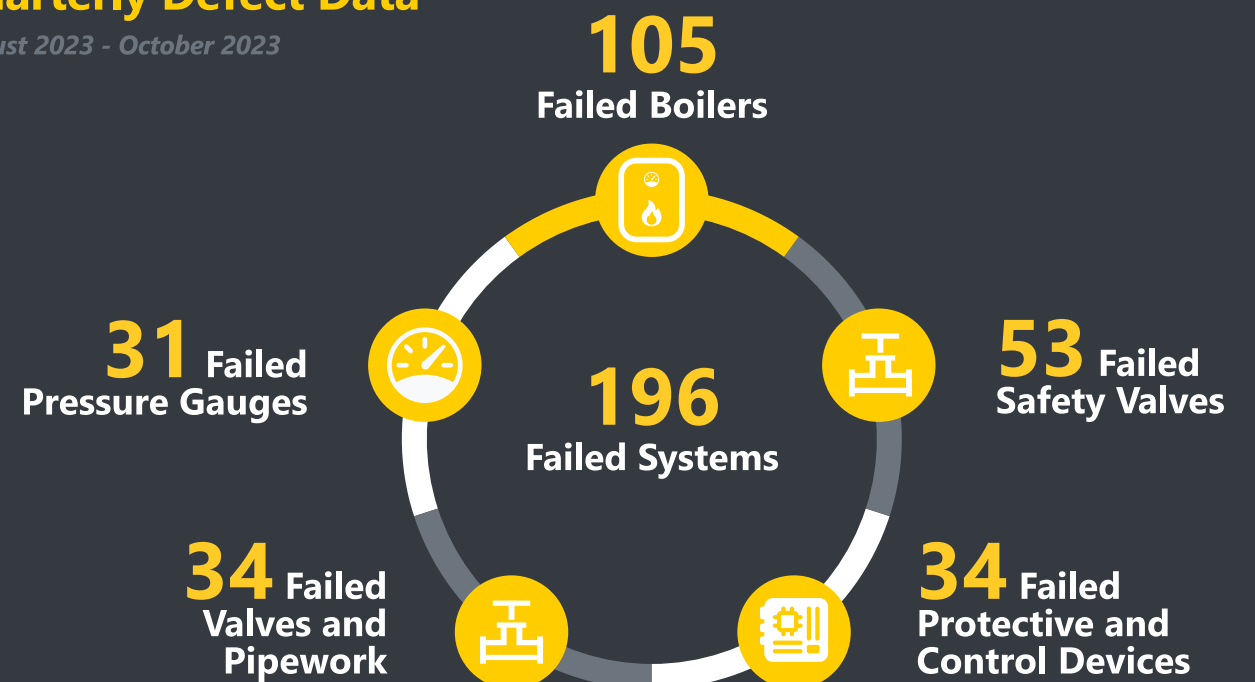
**Did you know?** CoffeeSafe has a long history of improving safety, raising accident prevention levels and promoting PSSR compliance within the coffee industry.

We have a team of dedicated health and safety professionals who are constantly working to identify and mitigate risks.

With the help of our service provider partners we have helped prevent several accidents by detecting the following safety defects;

## Quarterly Defect Data

August 2023 - October 2023



✉ [info@coffeesafe.com](mailto:info@coffeesafe.com)

☎ 01274 979920

🌐 [www.coffeesafe.com](http://www.coffeesafe.com)